

This manual contains important warnings and information. READ AND KEEP FOR REFERENCE.

LIQUIDYNAMICS

Pressurized Waste Oil Drain

Model 24175 – Instruction & Parts Manual



⚠ WARNING

These oil drains are not for use with flammable, explosive or corrosive products such as gasoline, diesel fuel or chemicals.

WARNING

This symbol indicates a potentially hazardous situation which, if not avoided, could result in death or serious injury.

CAUTION

This symbol indicates a potentially hazardous situation which, if not avoided, may result in injury or damage to equipment.

Introduction:

The model 24175 Waste Oil Drain will provide years of reliable operation. It is designed to collect waste oil, transmission fluid and anti-freeze in its large 21 gallon reservoir and allow easy transfer of these fluids either by pressurizing the tank with approximately 10 PSI of shop air or by use of an optional 1/2" dry break disconnect.

WARNING

Do not use this drain with flammable explosive or corrosive products such as Gasoline, Diesel Fuel or Chemicals. Do not do any welding on the reservoir.

CAUTION

While draining high temperature oils, keep hands and face protected. Only use the device for the purpose for which it has been designed.

Do not modify any components of the equipment. Use only original spare parts.



Fig. 1

Assembly:

Insert the handle into the holding fixtures (fig.1) provided on the reservoir



Fig. 2

and tighten the 3 mm Allen head screws. Place the tool tray 'A' on the bracket (fig. 2) provided by pushing the bracket firmly against the reservoir and then down onto the bracket. It may be necessary to use a mallet to gently tap the

tray into place.

Attach the riser tube assembly to the drain pan (fig. 3) and tighten snugly with a 1 1/2" open end wrench.

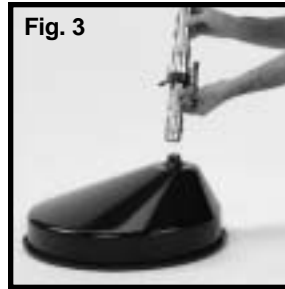


Fig. 3

'C' inside the drain pan as shown (fig. 4). Attach the hose 'D' with the hose clamp provided using a flat head screw driver (fig. 5).

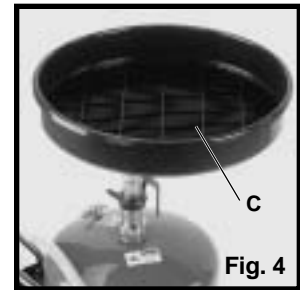


Fig. 4

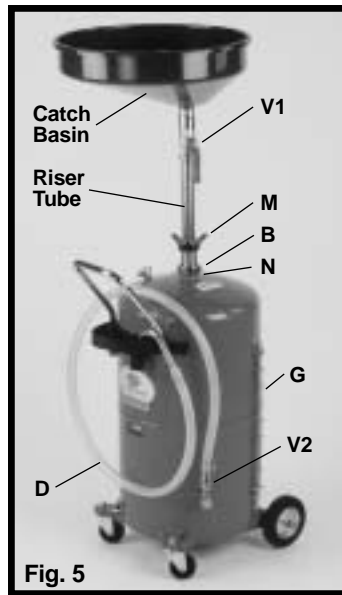


Fig. 5

Connect the assembled riser tube/catch basin assembly to the reservoir tank (fig. 5) by tightening ring nut 'B' with a spanner wrench or large slip joint pliers. Place the filter grate

Operating Instruction:

Daily use: To raise and lower the catch basin, loosen compression wing nut 'M' (fig. 5) and hand tighten after reaching the desired height.

Make sure that the four air vents 'N' (fig. 5) are unobstructed by not raising the riser tube assembly to its full up and locked position.

These vents allow air to escape while oil is

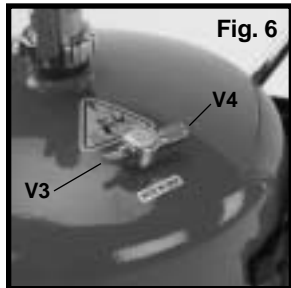
draining into the reservoir via the riser tube.

With drain valve 'V1' (fig. 5) closed, drained oil remains in the pan (pan capacity is 25 quarts). To drain oil from the pan to the tank, open drain valve 'V1' (fig. 5).

Note: Never fill the reservoir over the "STOP" level indicated by the sight gauge 'G' (fig. 5) on the side of the reservoir. Ensure that the discharge valve 'V2' (fig. 5) is closed to prevent inadvertent drainage of oil.

Emptying the Reservoir:

- 1.) Raise the catch basin/riser tube assembly (fig. 5) to its full up and locked position. This seals off the four small air vents 'N' at the bottom of the riser tube (fig. 5) and allows the reservoir to be pressurized.
- 2.) Close valve 'V1' (fig. 5).
- 3.) Attach the end of the drain hose to a suitable waste oil container.



- 4.) Pressurize the reservoir to approximately 7-10 PSI via Schrader valve 'V3' (fig. 6) and open discharge valve 'V2' (fig. 5). You may leave a regulated air supply (7-10 PSI) connected to the Schrader valve to allow

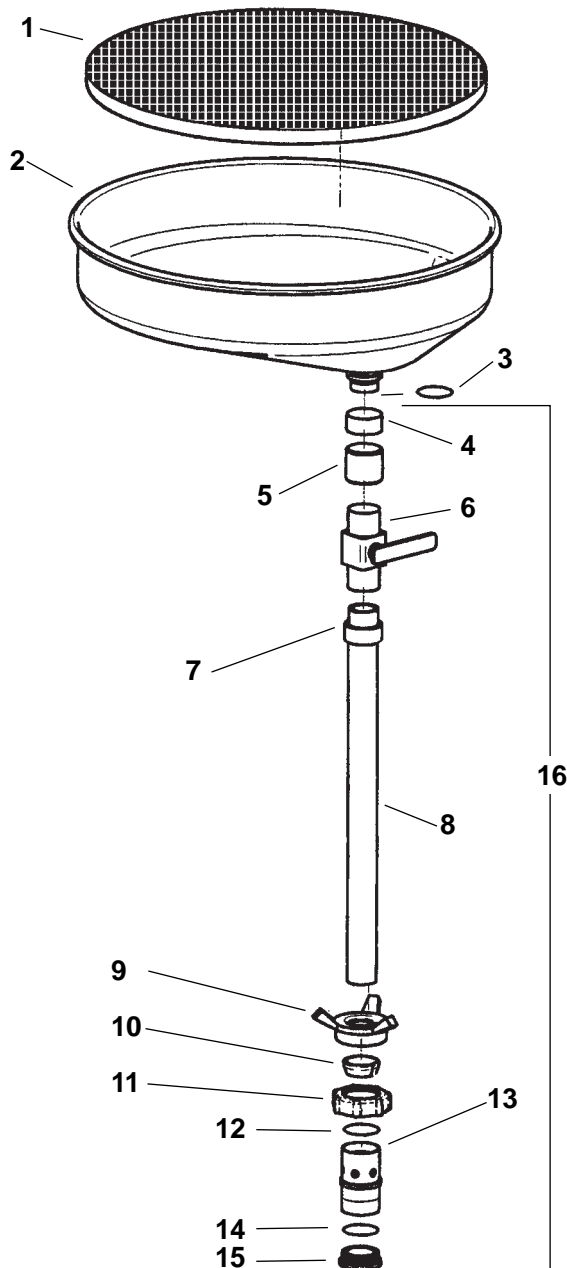
continuous evacuation of the reservoir OR you may charge the reservoir to 7-10 PSI as necessary (two or three times) to empty the reservoir completely.

Note: Safety relief valve 'V4' (fig. 6) will release air at approximately 15 PSI.

- 6.) After the fluid has been transferred from the reservoir, close valve 'V2' (fig. 5) and slightly lower (1-2 inches) the catch basin/riser tube (fig. 5) to once again allow air to escape while draining oil into the reservoir.

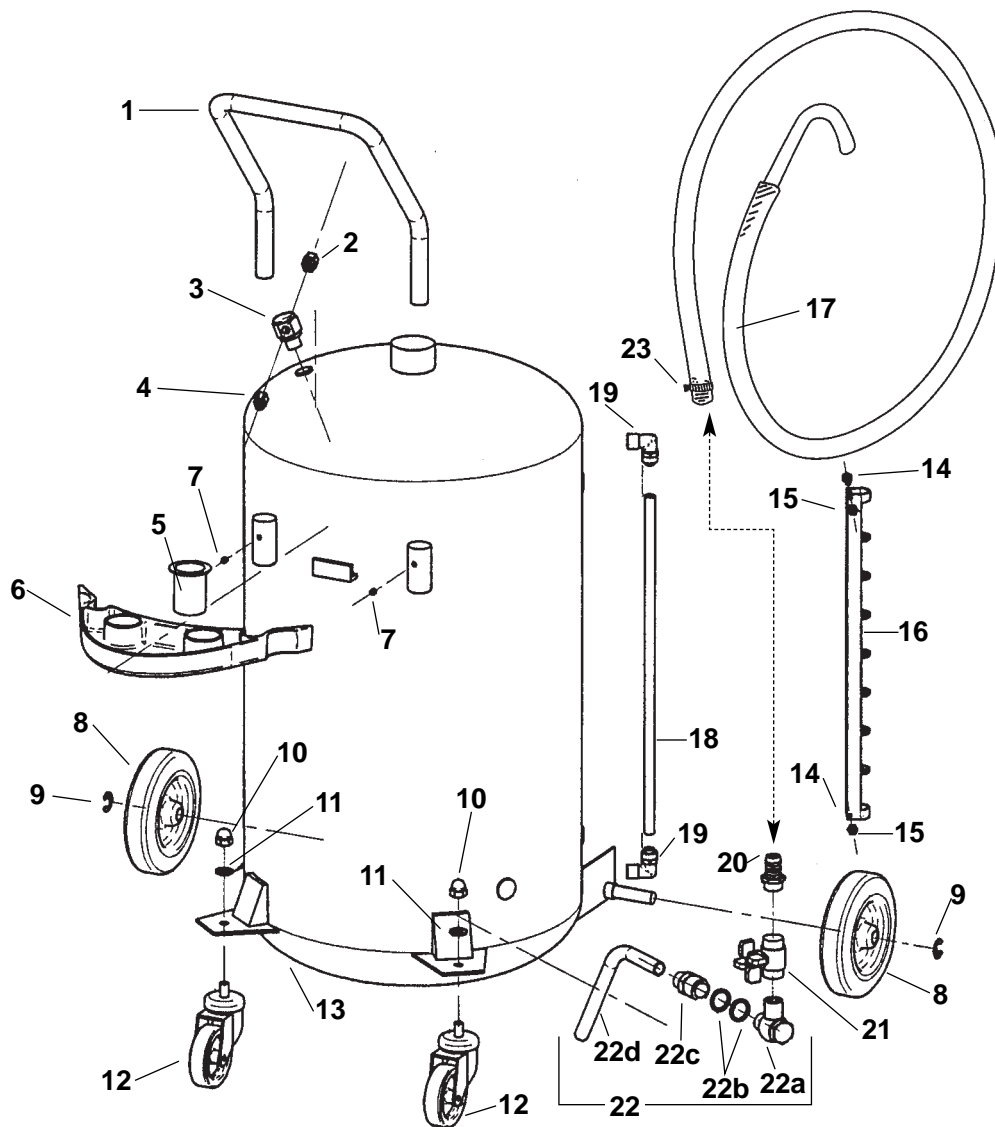
Specifications:

Model Number:	24175
Tank Capacity:	21 Gallons
Collection Bowl Capacity:	25 Quarts
Collection Bowl Diameter:	21"
Collection Bowl Effective Dia.:	31"
Maximum Working Height:	64"
Minimum Working Height:	49"
Discharge Hose Length:	6½'
Weight (empty):	64 lb.
Shipping Weight:	75 lb.



Exploded Parts Items (Drain Pan Assembly):

Assy	P/N	Item	Description
	P/N K4412	Riser Tube Seal Kit (7 pcs.)	
1	P/N S3207	Filter Grate	
2	P/N S3206	Drain Pan	
3	P/N S3201	'O' Ring, Drain Pan Seal (1 ea.)	
4	P/N S3215	Swivel Fitting	
5	P/N S3210	Bowl Swivel Retainer Fitting, Assy. (w/ 2 ea. seals)	
6	P/N S3209	Ball Valve, 1"	
7	P/N S3208	Cap Fitting, Top	
8	P/N S3221	Tube, Riser	
9	P/N S3216	Compression Wing Nut	
10	P/N S3218	Compression Fitting	
11	P/N S3217	Collar, Ring	
12	P/N S3204	'O' Ring, Union Nut	
13	P/N S3219	Tube, Vent, Assy. (w/ 2 ea. seals)	
14	P/N S3205	'O' Ring, Air Vent Seal (1 ea.)	
15	P/N S3222	Cap Fitting, Bottom	
16	P/N K4411	Riser Tube Assembly (incl. items 4-15)	



Exploded Parts Items (Tank Assembly):

Assy P/N S3226	Air Valve Assy. (items 2, 3 & 4)
1	P/N S3223 Handle
2	P/N S3224 Schrader Valve Assy.
3	P/N S3227 'T' Fitting
4	P/N S3228 Safety Relief Valve
5	P/N S3229 Drip Cup
6	P/N S3231 Tool Tray
7	P/N S3232 Allen Screw, 3 mm (2 ea.)
8	P/N S3233 Wheel, fixed
9	P/N S3234 Clip, Retainer
10	P/N S3235 Nut, Acorn
11	P/N S3236 Washer

12	P/N S3237 Caster, Swivel
13	P/N S3238 Tank, Reservoir, 21 gal.
14	P/N S3239 Screw
15	P/N S3240 Nut
16	P/N S3241 Guard, Sight Tube, 21 gal.
17	P/N S3242 Hose, Assembly
18	P/N S3243 Sight Tube, 21 gal.
19	P/N S3244 Elbow Fitting, Sight Tube
20	P/N S3245 Fitting, Hose
21	P/N S3246 Valve, Discharge
22	P/N S3247 Siphon Tube Assembly (items 22a-d)
23	P/N S3263 Clamp, hose



LIQUIDYNAMICS™
VALUE WORLDWIDE