

# LIQUIDYNAMICS

## Drum Cart

### Model 51009T

## Instruction & Parts Manual

### Introduction;

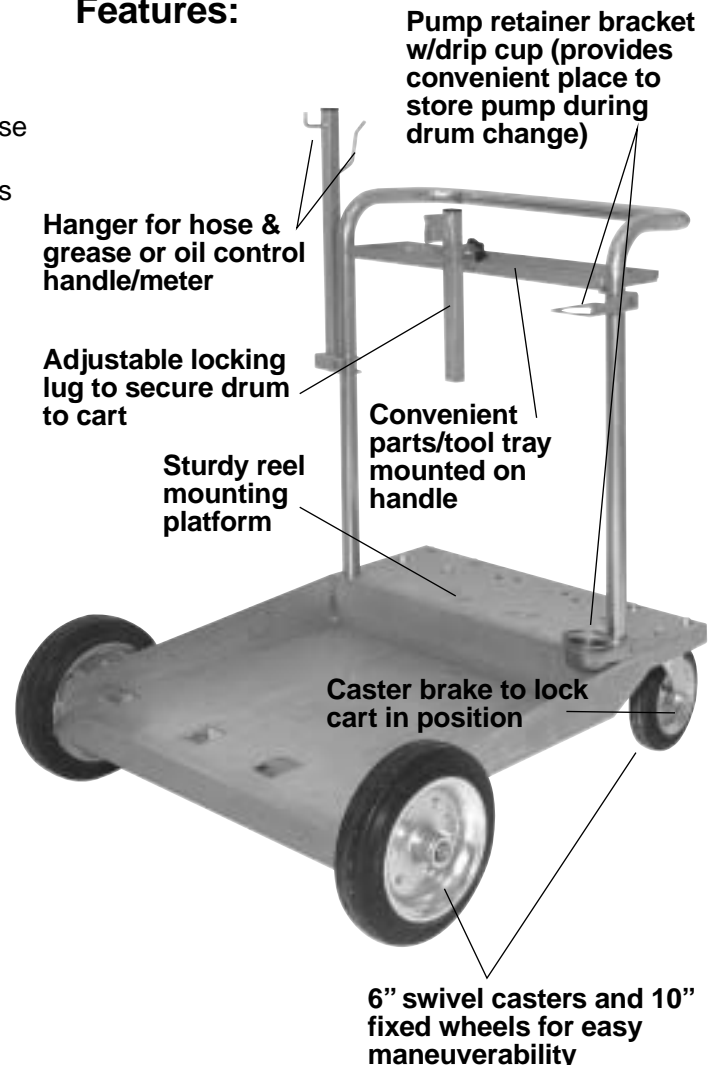
The model 51009T heavy duty drum cart is designed to be used with 420 lb. grease drums and 55 gallon oil drums. The cart design offers significant advantages in handling and control of these type drums, thus reducing the possibility of equipment damage or personal injury.

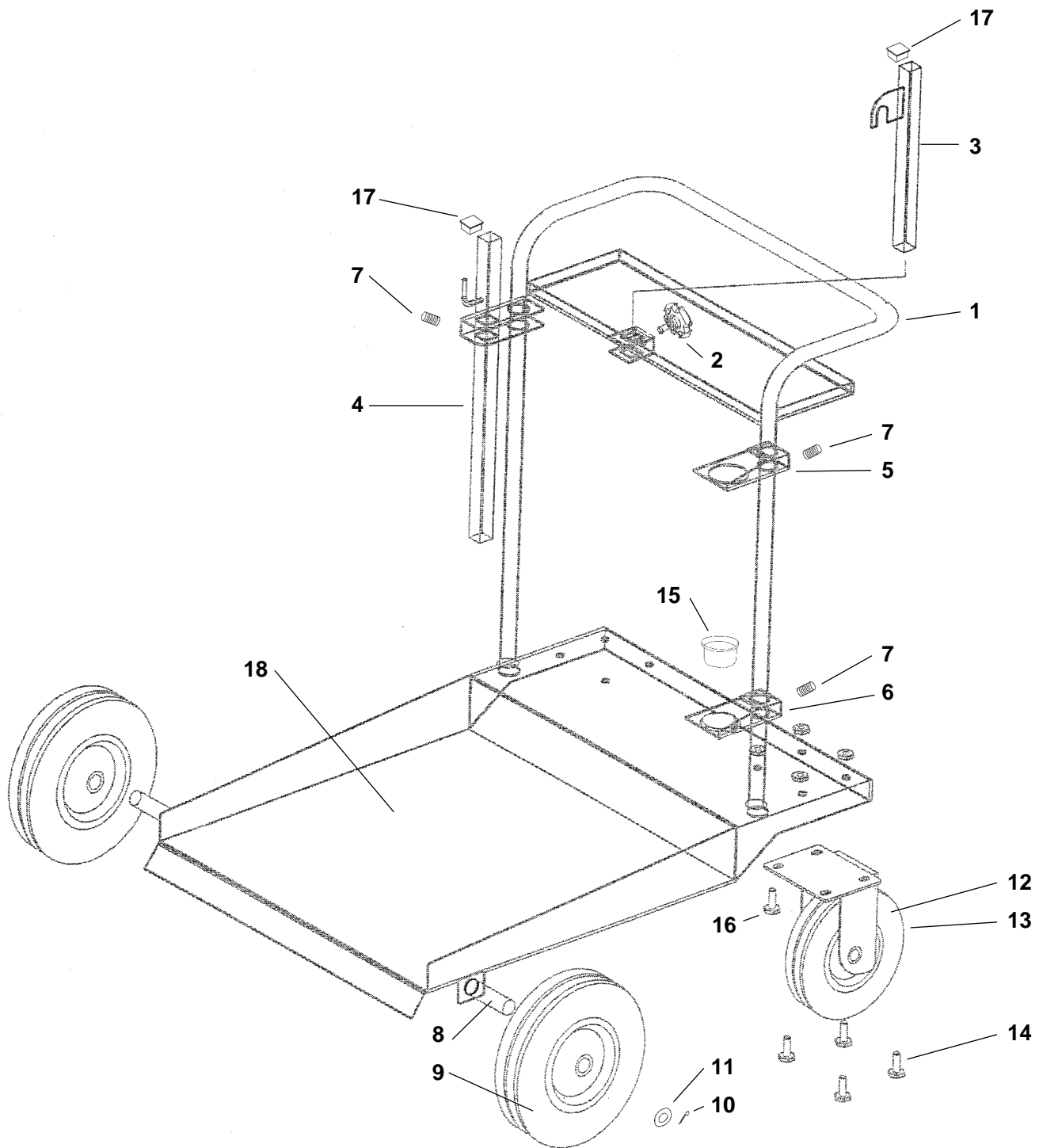
The 51009T cart design incorporates a built in tool shelf, sturdy reel mounting bracket, pump holding fixture with removable drip cup and hanger bracket for storage of hose and control handle. One of the swivel wheels has an incorporated foot brake to secure the cart in position. This cart incorporates large 6" swivel casters and 10" fixed wheels for easy maneuverability over rough floors.

### Assembly:

1. Use the exploded parts drawing as a guide for assembly.
2. Assemble the large fixed wheels and related items (#8, 9, 10 and 11) to the cart base #18.
3. Attach the two swivel casters (#12 & 13) to the cart base (#18) using bolts (#14).
4. Attach the plastic caps (#17) to hose/control valve hanger bracket (#4) and drum retainer rod (#3)
5. Slide the two pump retainer brackets (#5 & 6) onto the cart handle #1 as shown and secure with Allen screws #7. Take care to ensure that the bracket with the larger opening (#6) is in the lower position.
6. Slide the hose /control valve hanger bracket (#4) onto the handle as shown and secure with Allen screw (#7).
7. Position the handle assembly onto cart base as shown. Fasten handle assembly onto base with bolts #16.
8. Slide Drum retainer rod #3 into receptacle as shown and secure with lock knob #2.
9. Slip drip cup #15 into pump retainer bracket #6.

### Features:





**Exploded Parts Items – Cart Model 51009T:**

1	P/N S4400	Cart handle w/shelf	10	P/N S4456	Cotter key
2	P/N S4451	Locking knob	11	P/N S4483	Wheel washer, 1½" ID (2 ea.)
3	P/N S4401	Drum retainer rod	12	P/N S4484	Swivel caster w/brake, 6"
4	P/N S4402	Hose/Control valve hanger bracket	13	P/N S4485	Swivel caster w/o brake, 6"
5	P/N S4403	Pump retainer bracket, upper	14	P/N S4459	Bolt and nut, 1/2" (8 ea.)
6	P/N S4404	Pump retainer bracket, lower	15	P/N S4421	Drip cup
7	P/N S4405	Allen screw, 5 mm (3 ea.)	16	P/N S4486	Bolt and flat washer, 3/4" (2 ea.)
8	P/N S4481	Wheel shaft	17	P/N S4487	Plastic cap (2 ea.)
9	P/N S4407	Fixed wheel, 10"	18	P/N S4488	Cart base