

LIQUIDYNAMICS

Drum Cart

Model 51001T

Instruction & Parts Manual

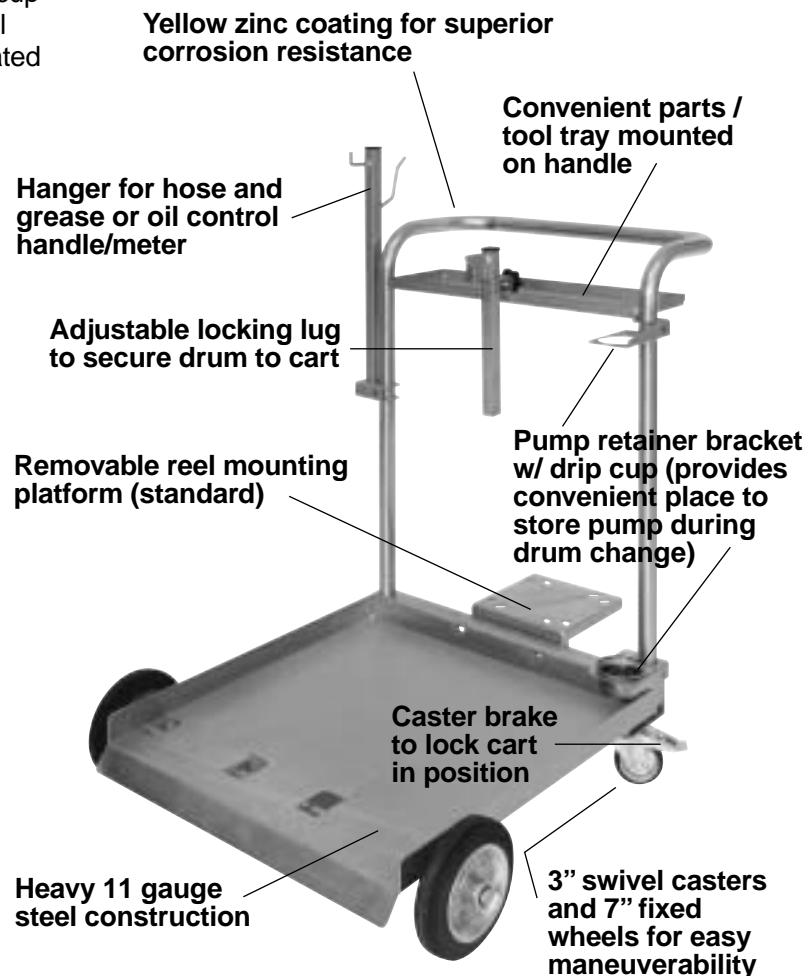
Introduction;

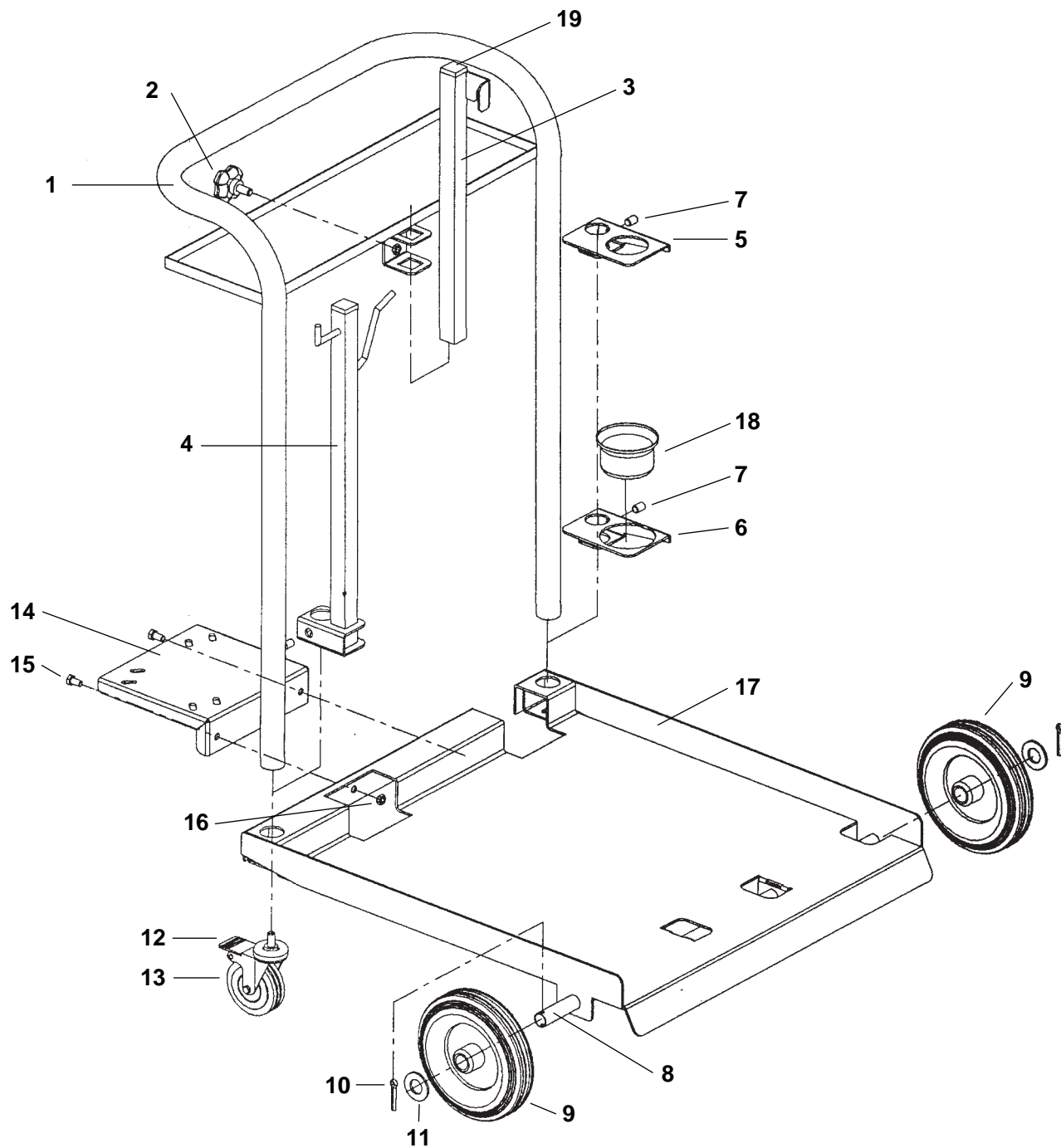
The model 51001T drum cart is designed to be used with 420 lb. grease drums and 55 gallon oil drums. The cart design offers significant advantages in handling and control of these type drums, thus reducing the possibility of equipment damage or personal injury. The 51001T cart design incorporates a built in tool shelf, removable reel mounting bracket, pump holding fixture with removable drip cup and hanger bracket for storage of hose and control handle. One of the swivel wheels has an incorporated foot brake to secure the cart in position.

Assembly:

1. Use the exploded parts drawing as a guide for assembly.
2. Assemble the large fixed wheels and related items (#8, 9, 10 and 11) to the cart base #17.
3. Slide the two pump retainer brackets (#5 & 6) onto the cart handle #1 as shown and secure with Allen screws #7. Take care to ensure that the bracket with large opening (#6) is in the lower position.
4. Slide the hose / control valve hanger bracket (#4) onto the handle as shown and secure with Allen screw (#7).
5. Position the handle assembly onto cart base as shown. Fasten handle assembly onto base with bolts provided on swivel casters #12 & 13.
6. If cart is to be used with a reel, attach reel mounting bracket (#14) with bolts (#15) and nuts (#16) as shown.
7. Slide drum retainer rod #3 into receptacle as shown and secure with lock knob #2.
8. Slip drip cup #18 into pump retainer bracket #6.

Features:





Exploded Parts Items – Cart Model 51001T:

1	P/N S4400	Cart handle w/ shelf	11	P/N S4408	Wheel washer, 5/8" I.D.
2	P/N S4451	Locking knob	12	P/N S4409	Swivel caster, w/ brake, 3"
3	P/N S4401	Drum retainer rod	13	P/N S4410	Swivel caster, w/o brake
4	P/N S4402	Hose/control valve hanger bracket	14	P/N S4411	Reel mounting bracket
5	P/N S4403	Pump retainer bracket, upper	15	P/N S4412	Bolt, reel mounting plate
6	P/N S4404	Pump retainer bracket, lower	16	P/N S4413	Nut, reel mounting plate
7	P/N S4405	Allen screw, 5 mm	17	P/N S4406	Cart base
8	P/N S4410	Wheel shaft	18	P/N S4421	Drip cup
9	P/N S4407	Fixed wheel, 7"	19	P/N S4487	Plastic Cap
10	P/N S4456	Cotter key			